

CASE STUDY – PCCS - Dubai

2012

CASE STUDY

PCCS – Case Study

Project Details

Name : Pacific Controls, IDC . **Year of Construction:** 2012

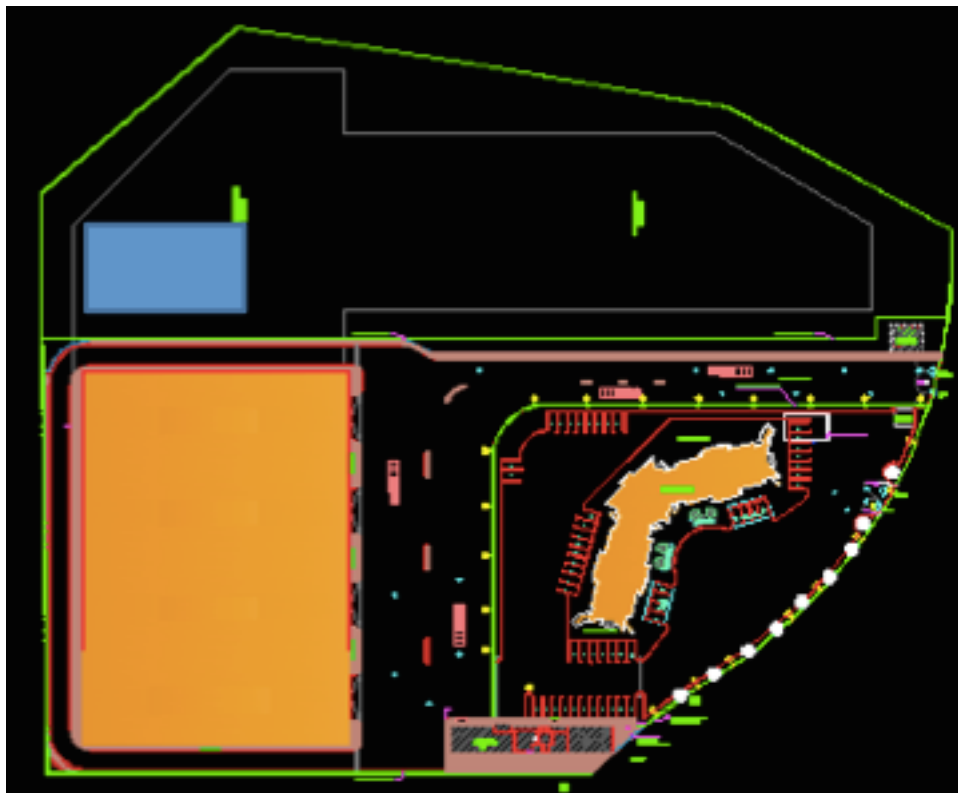
Location: Techno Park-Dubai. **Area of Facility:** 7 Acre

Load of Facility: 22 MW. **No: of Racks:** 1300+

Avg Load per rack: 5 & 10 KW . **PUE:** 1.6 Designed.

Background:

Pacific Control Cloud Services is the Data Centre arm of Pacific Control Systems, Dubai. A controls and automation group based in Dubai. It is the largest Data Centre campus in Middle East and is Uptime Tier III Design Certified.



mCIC Scope

mCIC was the Lead DC Design firm. Complete design of layout, Electrical, Mechanical, Security, Fire, Fire Suppression, Building Automation, Water leak detection & Rodent Control systems were in our scope of consultancy. Our scope also included the Design Certification from Uptime Institute, USA, for a Tier III rating.

Design Details & Challenges:

An existing warehouse of over 150000 sq ft was converted into a 4 Bay, Tier III certified Data Centre, hosting more than 1400 Racks and requiring 22 MW of Power. We used a "Box in a Box" philosophy to mitigate the environmental and natural risks. Raised the existing flooring to accommodate an 1 Mtr false floor and the use of special filters for avoiding "sand ingress". A special chilled water pipe trench, along the periphery of each bay of the DC, for reducing water leakage risk and the use of Cold Aisle containment for better air efficiencies.



Construction Phase

Images



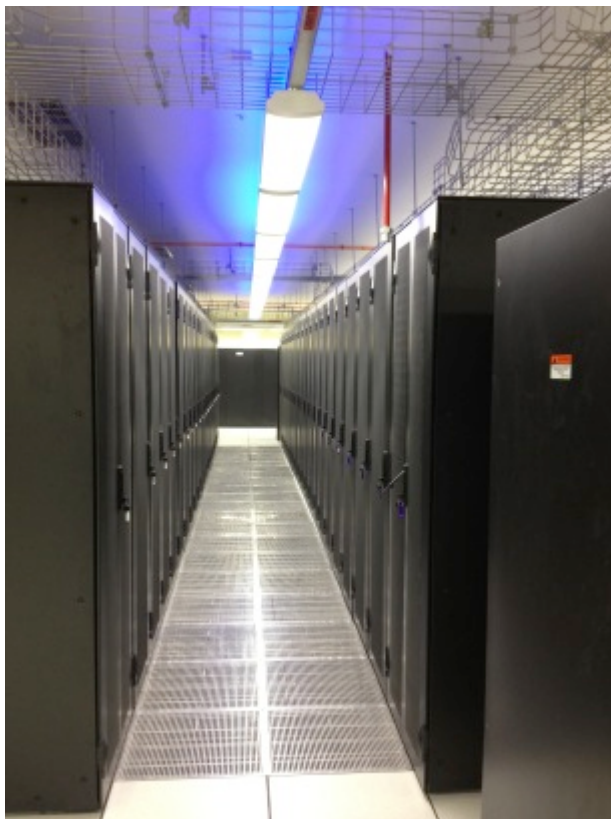
Chiller Bay Area



UPS + Electrical Room



Equipment Hall



Equipment Racks



Network Operation Center

END OF DOCUMENT